

ATC SURVEILLANCE
MINIMUM ALTITUDE CHART

AERODROME ELEV 5558'
TRANSITION ALT 8000'

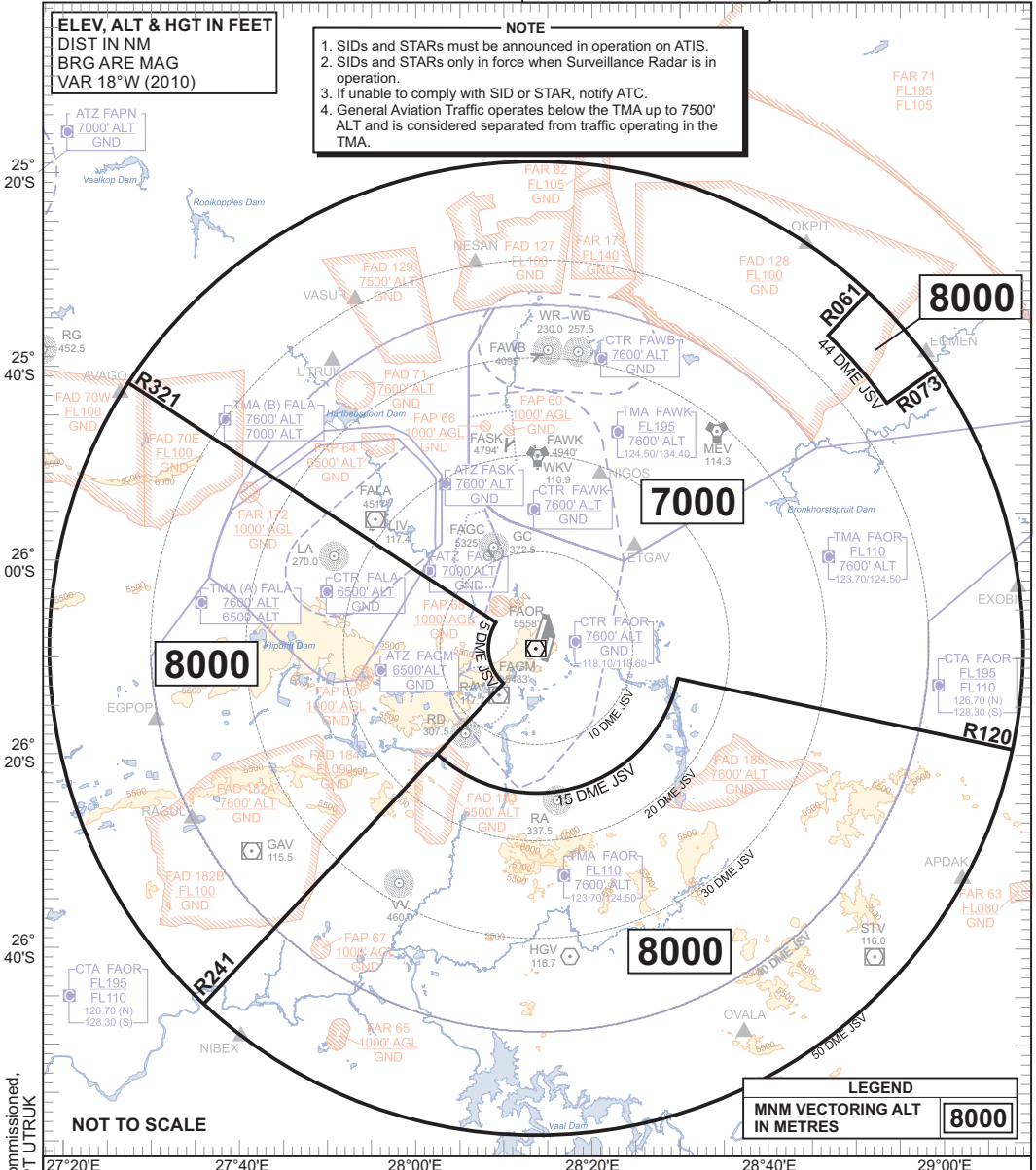
RADAR APP S 124.50 ATIS 126.20
 E 124.50 W 115.20
 W 123.70 SMC 121.90
 TWR E 118.60
 W 118.10

JOHANNESBURG
 (O.R. TAMBO INTERNATIONAL)
 FAOR

ELEV, ALT & HGT IN FEET
DIST IN NM
BRG ARE MAG
VAR 18°W (2010)

NOTE

1. SIDs and STARs must be announced in operation on ATIS.
2. SIDs and STARs only in force when Surveillance Radar is in operation.
3. If unable to comply with SID or STAR, notify ATC.
4. General Aviation Traffic operates below the TMA up to 7500' ALT and is considered separated from traffic operating in the TMA.



HBV decommissioned, CHANGE: new WYPT UTRUK

NOT TO SCALE

LEGEND
MNM VECTORING ALT IN METRES **8000**

Communication Failure Procedure: